

O SCALE TURNOUTS™, INC.

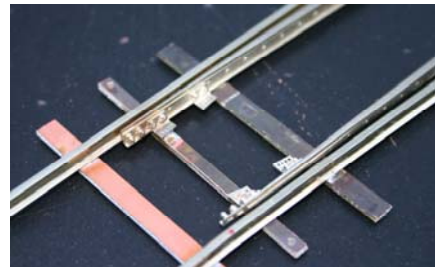
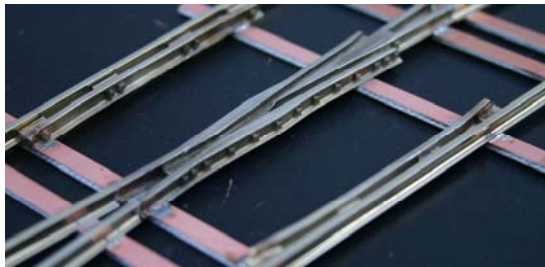
"Ready to Lay on your Right of Way™"

Updated: 5/15/2023

O Scale Turnouts™, Inc., a Michigan Corporation, was formed in 2012 to offer the O-scale 2-rail community (¼ scale and P48), an engineered, high quality and prototypical looking turnout that will outperform any ready to run store bought turnout at an affordable price.

Features:

- Designed to the NMRA **S-3.2 (Feb. 2010)** Standard, A.R.E.A. Manual for Railway Engineering and 1921 Maintenance of Way Standards.
- Constructed using our own in-house designed, precision milled fabrication jigs.
- **Rail and Trackwork Supplies™** (www.ratsna.com) cast frog, guard rails and points for a prototypical appearance.



- 11-PC ties resistance soldered to the rail to insure precise track gauge.
- Solid (non-hinged) Points.
- Staggered rail ends.
- Diverging stock and frog rails extended (#8, #10) for single cross-over application on 4" centerline.
- DC / DCC compatible.
- Insulated Frog.
- Point rails electrically connected to the stock rails.
- Prototypical tie spacing.
- Throw bar pinned to each point transit clip.
- Proudly manufactured in the United States by American Citizens.

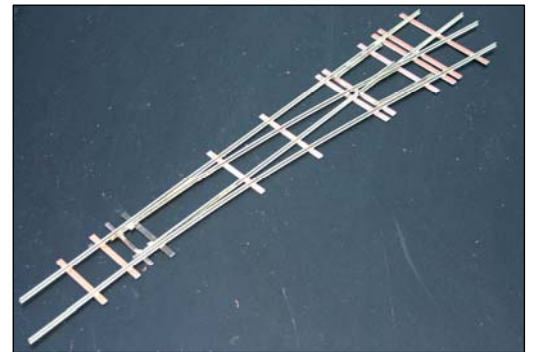
Updated: 5/15/2023

Turnout Configurations:

OscaleTurnouts™ offers three (3) turnout configurations:

1. Base (PC)

- 11 - PC ties resistance soldered to the Nickel Silver rail.
- **RATS** cast frog, guard rails and points.
- Insulated frog
- DC / DCC compatible.
- Ready to lay on wood ties (ties not included)

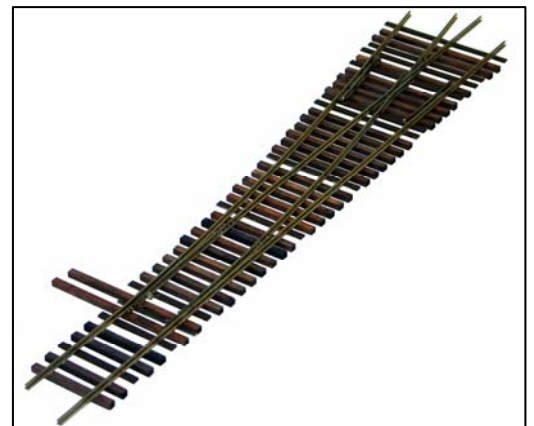


2. Ready to Lay™ (RL)

The Ready-to-Lay™ configuration is for the modeler who wants the closest thing to a store bought turnout.

The **Ready to Lay™ (RL)** turnout includes:

- Base (PC) turnout.
- Stained wood ties (water soluble) glued to the rail.
- Painted PC ties.
- Scale ties.
- Prototypical tie spacing.
- 18ga. feeder wire soldered to the frog (**optional @ \$10.00 per turnout**).



3. Detail Kit (SD)

This kit is designed for the modeler who wants to create a super detailed turnout. **Assembly required.**

The **Detail Kit (SD)** includes:

- Base (PC) turnout.
- Un-stained wood ties, pre cut to length.
- Tie plates: 14" and 24" (plastic).
- Head bar & back bar (plastic).
- Rail braces (nickel silver).
- Joint Bars (plastic)

Updated: 5/15/2023

Product Line:

All turnouts are constructed using our own prototypical profiled nickel silver, non-weathered rail.

• **Current Offerings (as of 5/15/2023)**

★ **Code 100**

- #6 – Bolted Frog.

★ **Code 125**

- #6 – Rail-bound and Bolted Frog.
- #6 Wye – Bolted Frog.
- #7 – Bolted Frog
- #8 – Rail-bound Frog.
- #10 – Bolted Frog.

★ **Code 148**

- #4 Wye – Rail-bound Frog
- #5 – Rail-bound Frog. (designed to replace the Atlas variant)
- #6 – Rail-bound and Bolted Frog.
- #6 Wye – Bolted Frog.
- #6 Lap (3-way) – Rail-bound Frogs.
- #6 Double Slip – Rail-bound Frogs, Code 148
- #6 Single Slip – Rail-bound Frogs, Code 148
- #7 – Rail-bound Frog.
- #7.5 – Rail-bound Frog. (designed to replace the Atlas variant)
- #8 Right – Rail-bound Frog.
- #8 LAP (3-way) - Rail-bound Frogs.
- #10 Right – Rail-bound Frog.
- 60"/84" Curved – Rail-bound Frog.
- #8 Crossing (7.15°) – Rail-bound Frogs.

Updated: 5/15/2023

★ **Code 148**

- #8 Single Slip (7.15°) – Rail-bound Frogs.
- #8 Double Slip (7.15°) – Rail-bound Frogs.
- #8 Double Cross Over – Rail-bound Frogs

★ **P48 Code 100**

- #6 Right – Bolted Frog.
- #6 Left – Bolted Frog.

★ **P48 Code 125**

- #6 – Bolted Frog
- #7 - Rail-bound Frog.
- #8 – Rail-bound Frog.
- #10 – Rail-bound Frog.

● **Future Offerings:**

- ★ Hayes Wheel Stop (metal)
- ★ #5 – Rail-bound Frog, Code 125
- ★ #5 Wye – Rail-bound Frog, Code 125
- ★ #5 Wye – Rail-bound Frog, Code 148
- ★ #6 Crossing - Rail-bound Frogs, Code 148.
- ★ 14.3 Degree Crossing - Rail-bound Frogs, Code 148.
- ★ 84"/66" Curved - #12 Rail-bound Frog, Code 148 (design completed)
- ★ 84"/72" Curved - #15 Rail-bound Frog, Code 148 (design completed)

● **Custom Runs**

O Scale Turnouts™ welcomes all custom applications. Price and delivery will depend upon the complexity of the design and the quantities required.

O SCALE TURNOUTS™, INC.

"Ready to Lay on your Right of Way™"

Updated: 5/15/2023

• Pricing

Price (Code 100):

- Base (PC)
- Ready to Lay™ (RL)
- Detail Kit (SD)

#6
\$ 95.00
\$ 110.00
\$ 150.00

Price (Code 125):

- Base (PC)
- Ready to Lay™ (RL)
- Detail Kit (SD)

#6	#7	#8	#10
\$ 90.00	\$ 95.00	\$ 95.00	\$ 95.00
\$ 105.00	\$ 110.00	\$ 110.00	\$ 110.00
\$ 145.00	\$ 155.00	\$ 155.00	\$ 155.00

Price (Code 148):

- Base (PC)
- Ready to Lay™ (RL)
- Detail Kit (SD)

#5	#6	#6 Lap	#6 DBL Slip
\$ 90.00	\$ 90.00	\$ 265.00	\$445.00
\$ 105.00	\$ 105.00	\$ 300.00	\$475.00
\$ 145.00	\$ 145.00	\$380.00	NA

- Base (PC)
- Ready to Lay™ (RL)
- Detail Kit (SD)

#7	#7.5
\$ 95.00	\$ 95.00
\$ 110.00	\$ 110.00
\$ 155.00	\$ 155.00

- Base (PC)
- Ready to Lay™ (RL)
- Detail Kit (SD)

#8	#8 Lap	#10	60"84" Curved
\$ 95.00	\$ 290.00	\$ 95.00	\$99.00
\$ 110.00	\$ 325.00	\$ 110.00	\$ 120.00
\$ 155.00	\$ 370.00	\$ 155.00	\$ 180.00

O SCALE TURNOUTS™, INC.

"Ready to Lay on your Right of Way™"

Updated: 5/15/2023

Price (Code 148):

- Base (PC)
- Ready to Lay™ (RL)

#8 Crossing	#8 SGL Slip	#8 DBL Slip	#8 DBL Cross Over
\$ 265.00	\$ 360.00	\$ 450.00	\$ 650.00
\$ 290.00	\$ 395.00	\$ 485.00	\$ 750.00

P48 Price (Code 100):

- Base (PC)
- Ready to Lay™ (RL)
- Detail Kit (SD)

#6
\$95.00
\$110.00
\$150.00

P48 Price (Code 125):

- Base (PC)
- Ready to Lay™ (RL)
- Detail Kit (SD)

#6	#7	#8	#10
\$95.00	\$ 99.00	\$ 99.00	\$ 105.00
\$110.00	\$ 115.00	\$ 115.00	\$ 120.00
\$150.00	\$ 160.00	\$ 160.00	\$ 165.00

Prices subject to change without prior notice.
U.S. Dollars.
F.O.B. Hamburg, Michigan.

Options:

- Hinged points - **\$25.00 per turnout**
- 18ga. feeder wire soldered to the frog - **\$10.00 per frog.**

Terms:

- PayPal (family and friends)
- Credit Card (3.75% processing fee)
- Bank Cashiers Check
- Postal Money Order
- No C.O.D.

Distribution Channels:

- Direct
- Ebay – under the name of "oscaleturnouts"

O SCALE TURNOUTS™, INC.

"Ready to Lay on your Right of Way™"

Updated: 5/15/2023

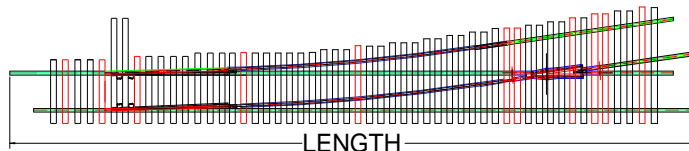
Shipping and Handling:

- All turnout are shipped insured via US Priority Mail within 3 days (subject to inventory) after receipt of payment.
- All turnout are packaged in plastic bags that are taped to cardboard and then placed in either a 28" x 6" x 6" or 36" x 8" x 8" cardboard box. Orders greater than 6 turnout may be packaged in multiple boxes.
- A handling fee is assessed on all orders. It includes the cost of "Insurance" and shipping supplies.



Turnout Dimensional Data:

Size	Length	Radius (approx.)
5	19.75"	55"
6	19.75"	68"
6 Lap	27.5"	68"
7	24.5"	80"
7.5	28.875"	113"
8	26"	132"
8 Lap	34"	130"/95"
10	28.875"	165"



Contact:

O Scale Turnouts, Inc.
PO Box 818
Hamburg, MI 48139
810-231-4461
info@oscaleturnouts.com

Acknowledgements:

This project would not have been possible without the help of the following:

- Joe Giannovario (RIP), Publisher , O Scale Trains Magazine
- Louis Cross (RIP), Owner, Right-O-Way
- John Pautz (Retired), Founder, American Switch & Signal